

SPECIALISING IN

V-Sports Multi

A high-performing cost effective floor for stadiums, sporting facilities, schools, exhibition and events venues.

Meets FIBA Level 1

10 Year Warranty on new floors

1 year warranty on seal

Extended maintenance programs are also available



TASMANIAN OAK

Waverley Christian
College Size 943m²



RB | **TIMBER FLOORING**

Why our floors are superior

**ALL OF OUR FLOORS MEET OR EXCEED
THE FIBA LEVEL 1 STANDARDS
SET DOWN IS 71 MM**

WE SPECIALISE IN

- New floors
- Sand & seal
- Maintenance
- Repairs
- Refurbishment
- Skirting
- Line marking
- Logos
- Box seating
- Stages
- Cover strips

3 x top coats of Seal
FIBA certified water
or oil based
Penetrating seal
to protect floor
Line markings and logos
using the latest
FIBA standards



Battens F17 hardwood
for **superior strength** are
resistant to moisture-related
breakdown & ensure that nails
remain securely embedded

Galvanised secret nailed
using 50mm crown staples
in every board at all bearer
crossings to minimise
warping and movement

12mm layer of plywood fixed
perpendicular to each other to
strengthen the floor

Resilient floor pads
50 to 55 durometer hardness
battens 300-400mm centres.
Solid blocking at perimeters
and under retractable seating

Plastic membrane 200 micron
high impact plastic. Taped at
lapped. 20mm joints to help
protect against moisture

Concrete slab must be level
13mm over 3m

V-Sports Multi is a great system for both **sports and multi use floors.**

It's a great system for schools, varied sports and multi use floors.

Talk to us to see how it can be customized to meet your budget.

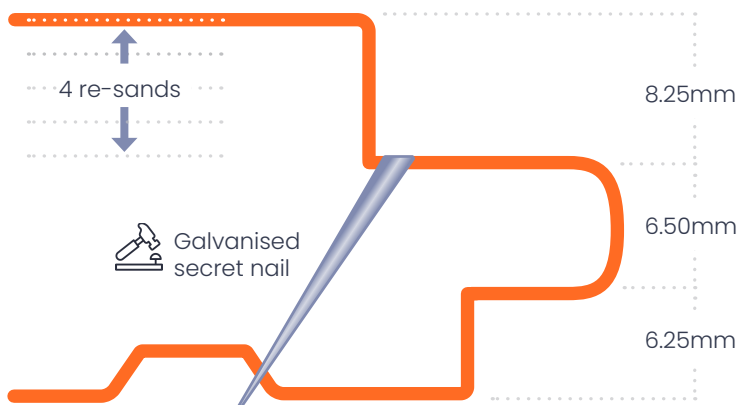
Australian Hardwood Quality guaranteed



We meet all Australian Forestry Guidelines and all Timber Supplies Compliance

Timber is a natural product and is affected by its environment. To ensure the health of your timber and the longevity of your floors, we take moisture readings to determine the acclimatisation period it needs and the number of expansion gaps needed to ensure the best possible lay and an optimum lifetime finish.

• **Australian grown** • **Sustainably sourced** •



Australian Profile

HARDWOOD FLOOR CHARACTERISTICS

Australian hardwoods are the superior option for multi-purpose sports floors because they look great and rank higher on the **Janka* Hardness Test**. The higher the Janka* score, the more durable and less prone to marks, wearing and dents the floor will be.

ETHICALLY SOURCED TIMBERS

Each time the floor is re-sanded, the weight rating will decrease. Note when placing heavy loads on the floor the weight must be dispersed over the floor with 20mm ply.

WAVERLEY CHRISTIAN COLLEGE

Tasmanian Oak – 943m²



Superior floors & service

**COMPARE FIBA WITH RB'S SUPERIOR STANDARDS
WE MEET OR EXCEED FIBA'S STANDARDS IN ALL AREAS**

Shock absorption / force reduction	Standard deformation	Ball response	Rolling load Resilient life
FIBA Level 1 Compliance standards on permanent wooden flooring			
≥50% to ≤70%	≥2.3 mm to ≤5.0 mm	≥93.0%	≤0.5 mm
RB's results on Tasmanian oak permanent wooden flooring			
54%	4.1 mm	93.7%	≤0.5 mm

NOW IN PARTNERSHIP WITH STARENA SEATING

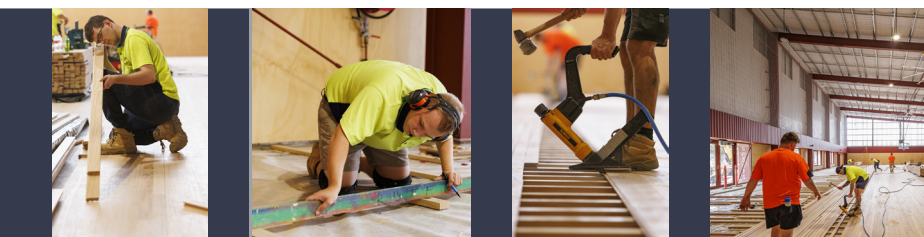
Starena can customise seating solutions to your venue's requirements. Save time and money by having us work hand in hand, to deliver faster results and reduce your costs for installation. We can offer a turn key solutions to fit in with your construction time lines.

SKIRTING

Skirting not only finishes off your floor but plays an important role in its optimal performance as it is designed to provide ventilation to the timber while protecting the sub floor from moisture.

GAMES POSTS & ELECTRICALS

We install games posts and cover plates for electrical boxes.

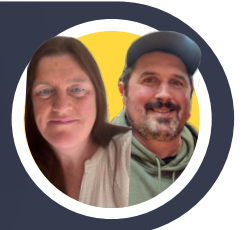


GET IN TOUCH

(03) 8201 7707 or (03) 9434 2896
info@rbtimberflooring.com.au
www.rbtimberflooring.com.au

Talk to us about how we can help you improve your floors, call us today.

Vicky & Chris
DIRECTORS



Factory 8
 63 – 71 Bayfield Road East
 Bayswater North VIC 3153